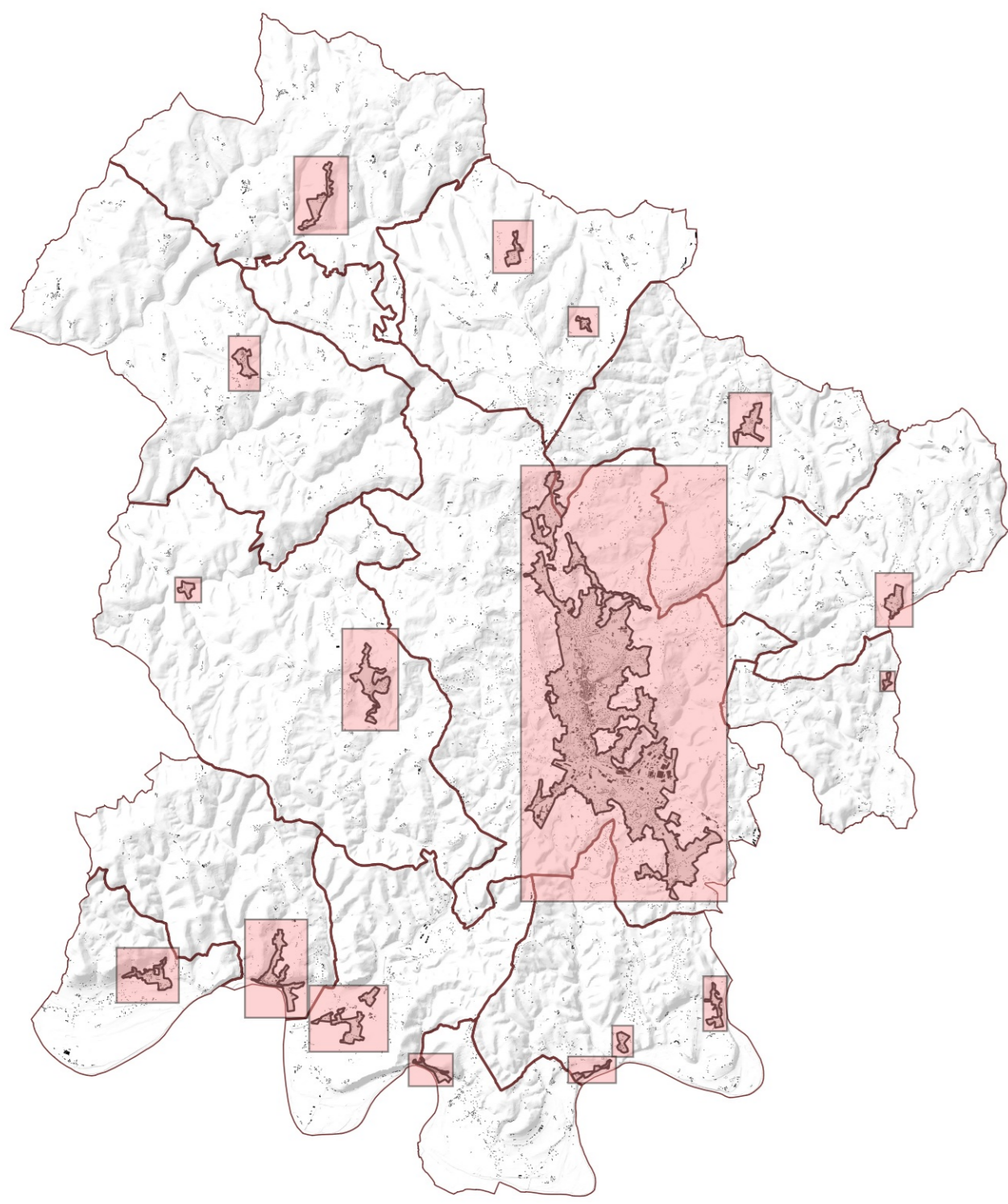
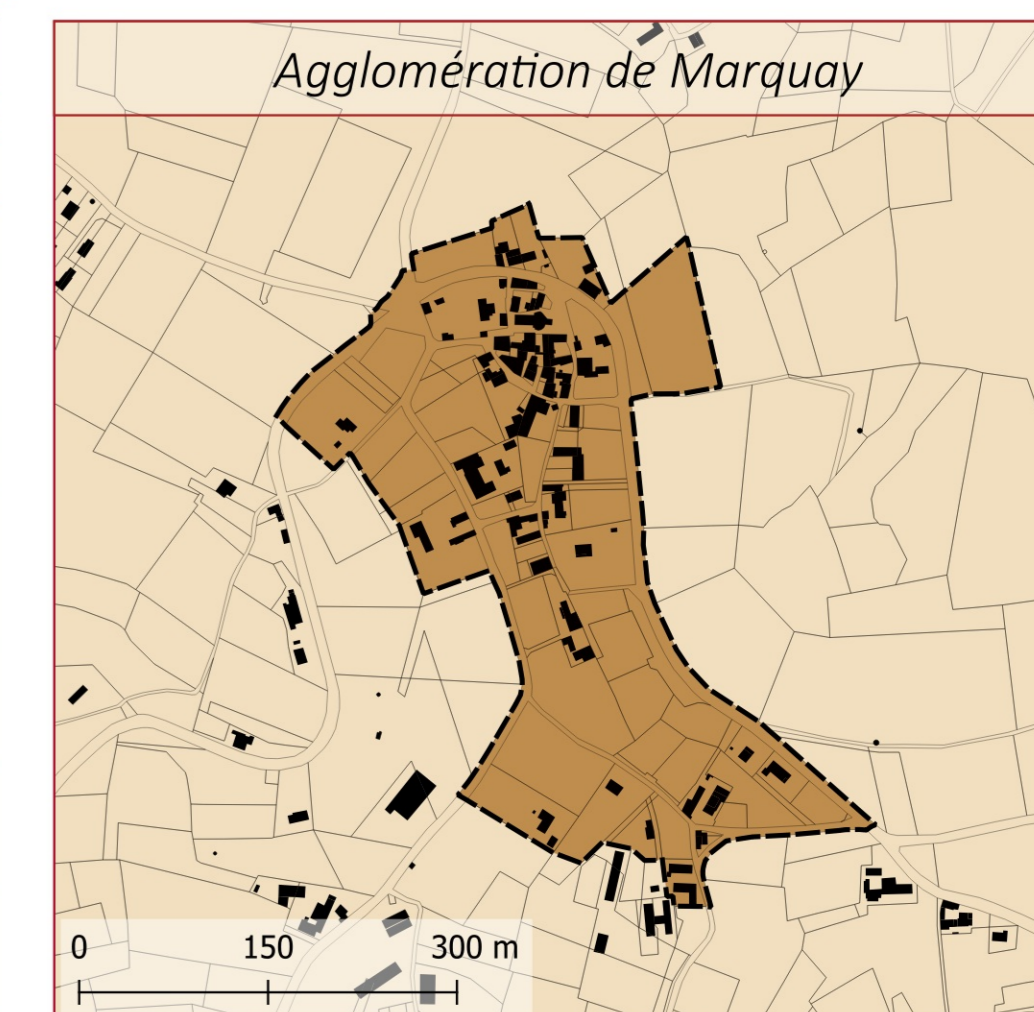
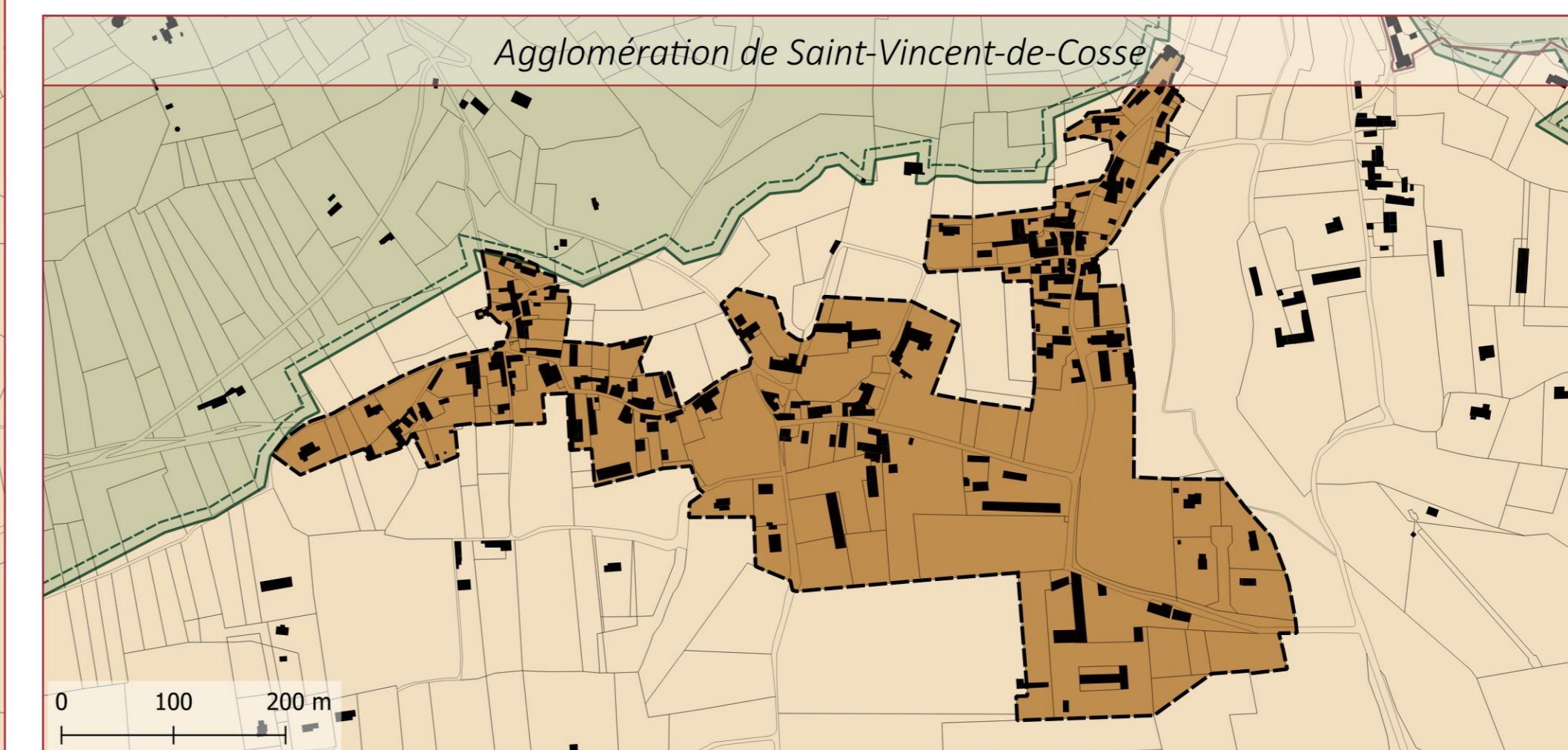
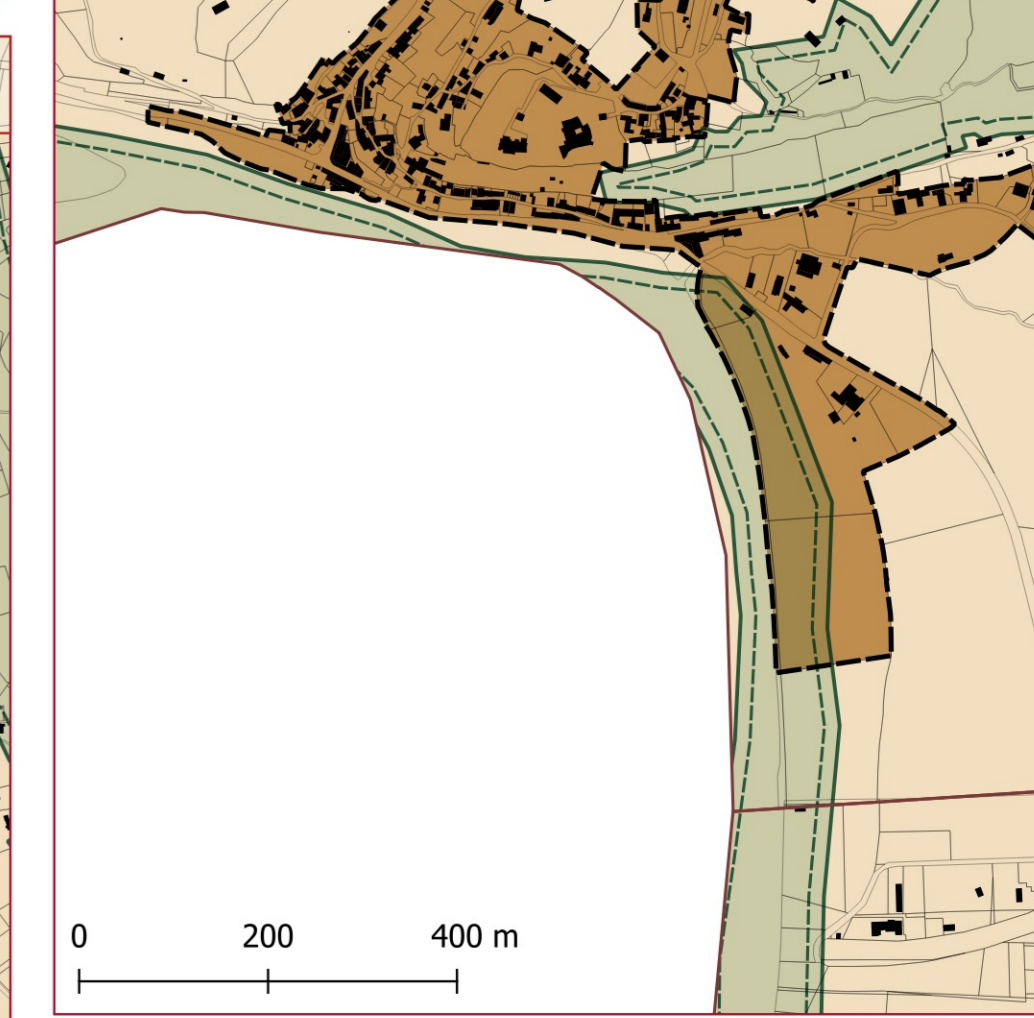
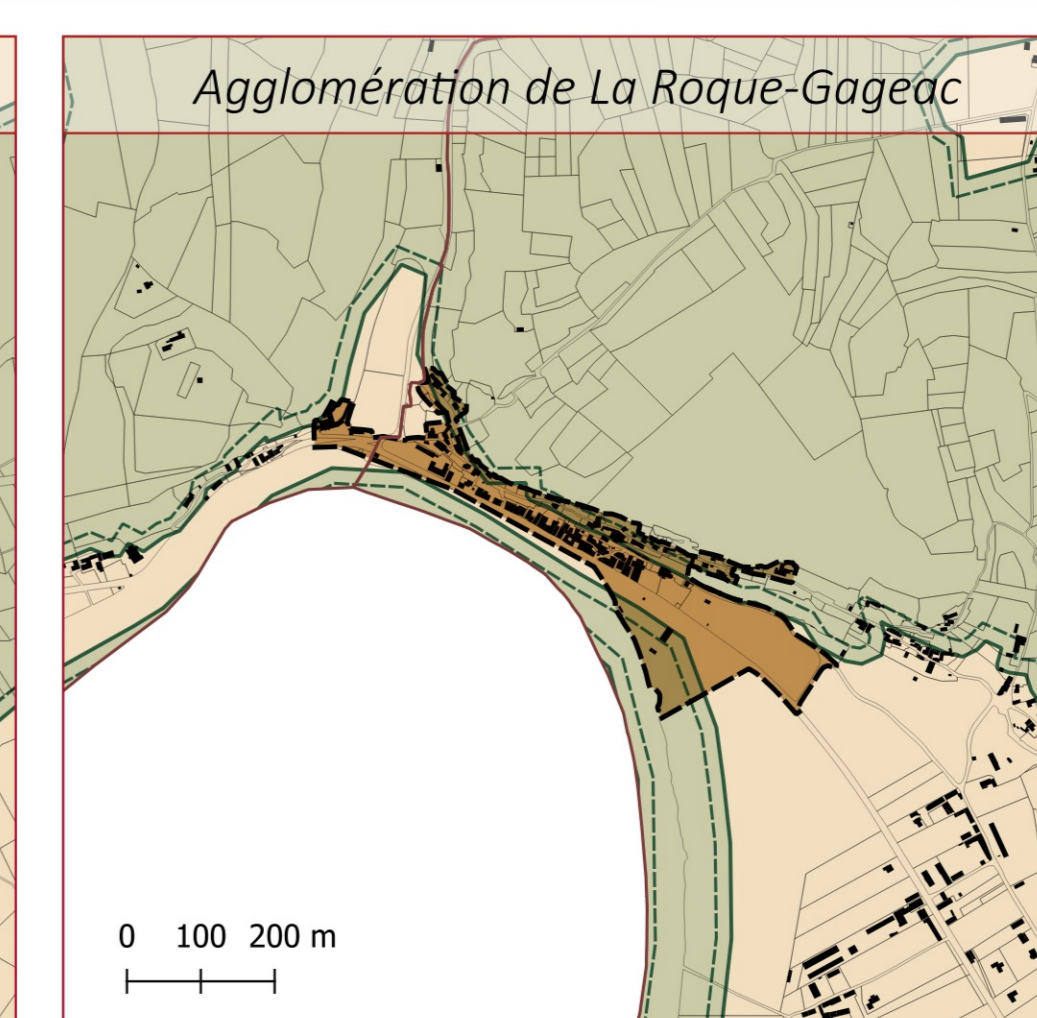
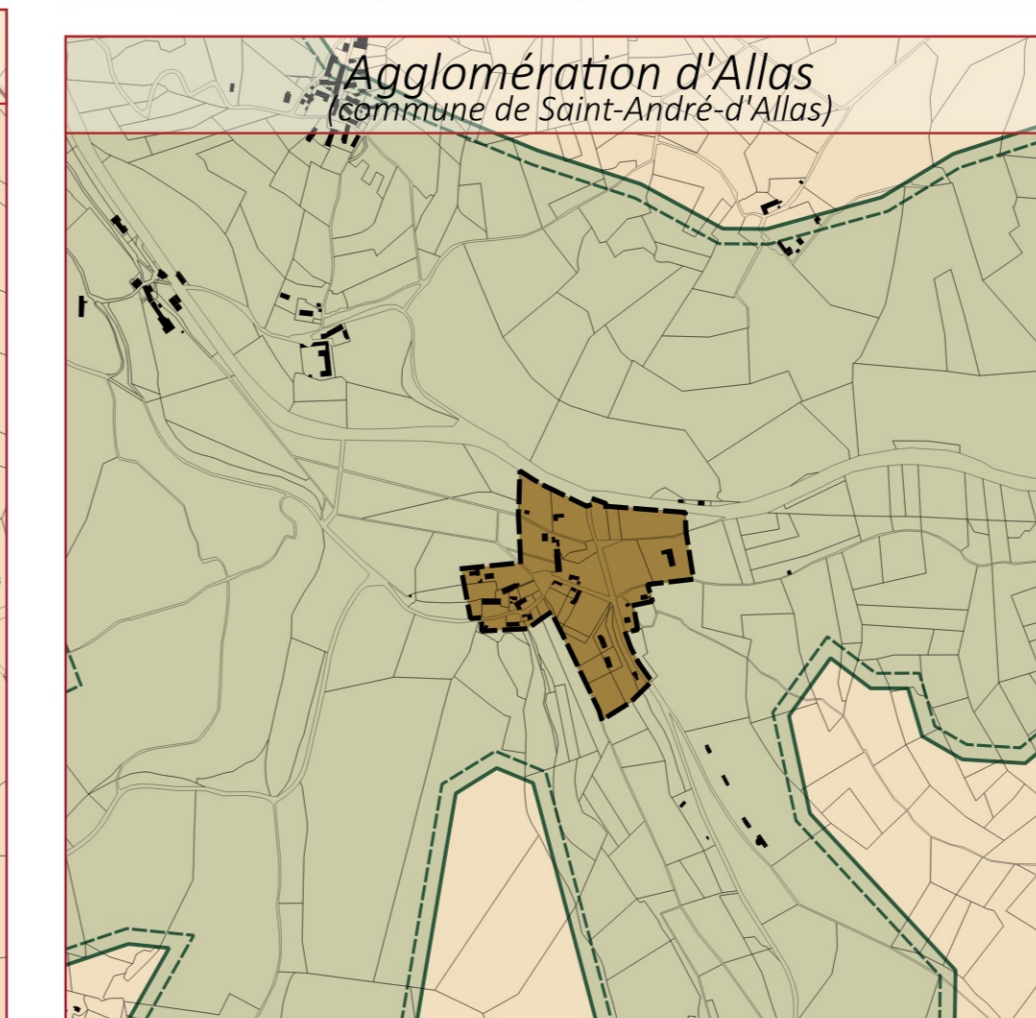
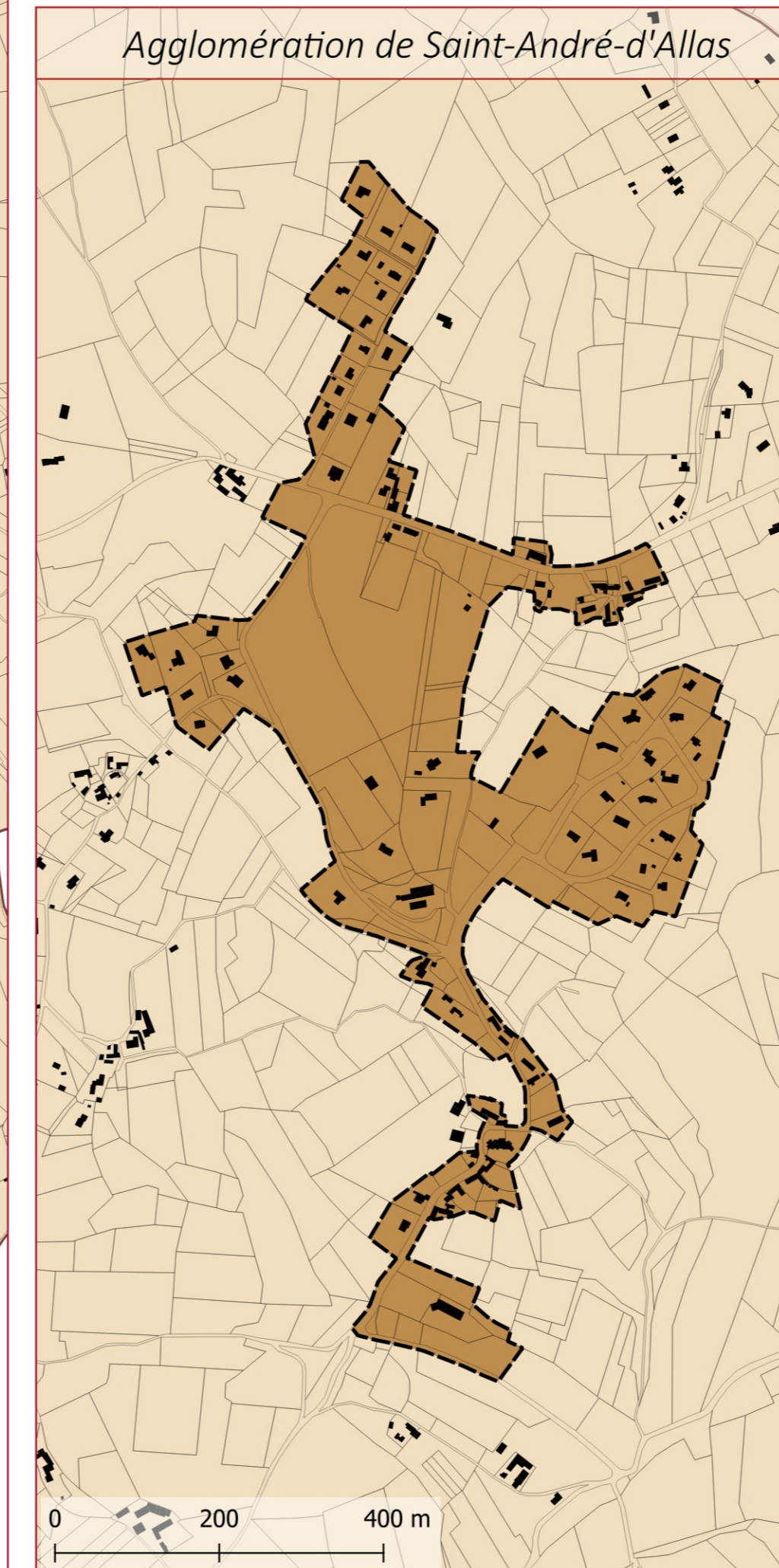
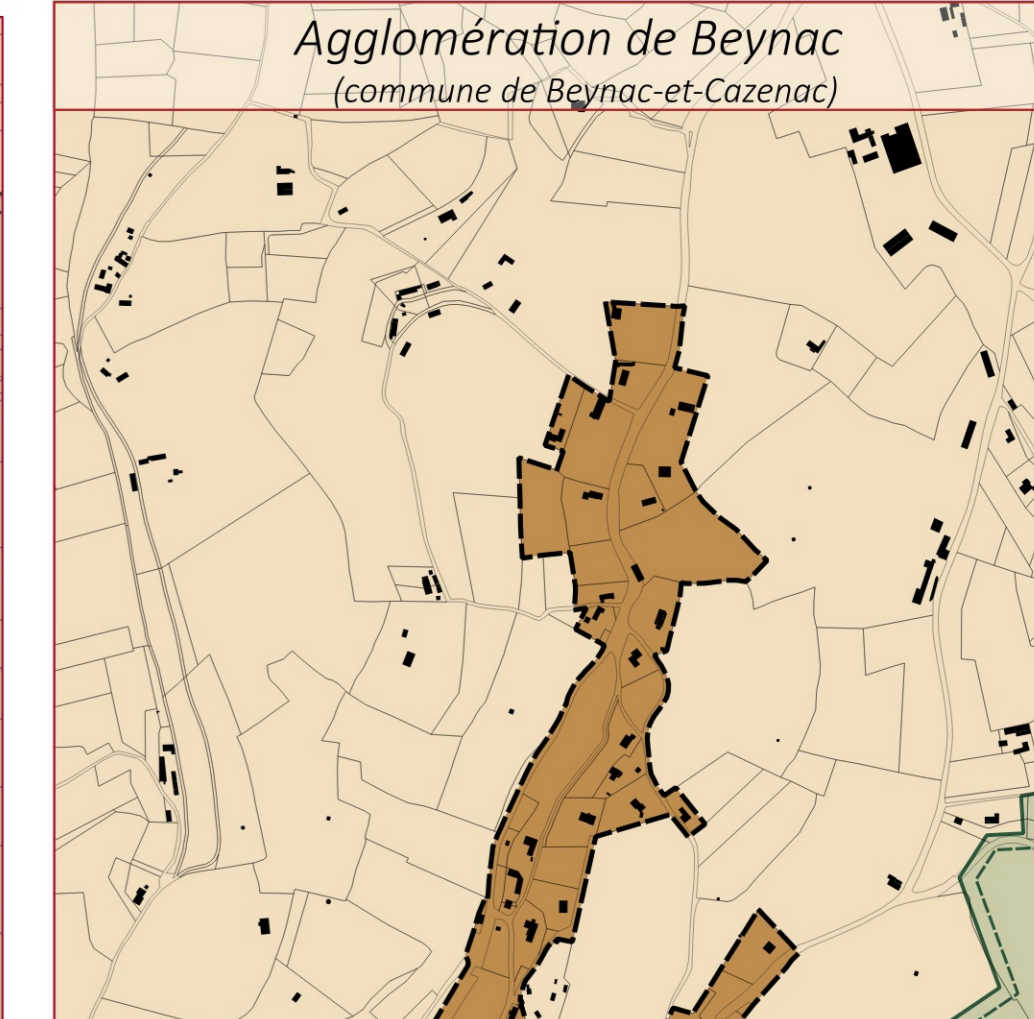
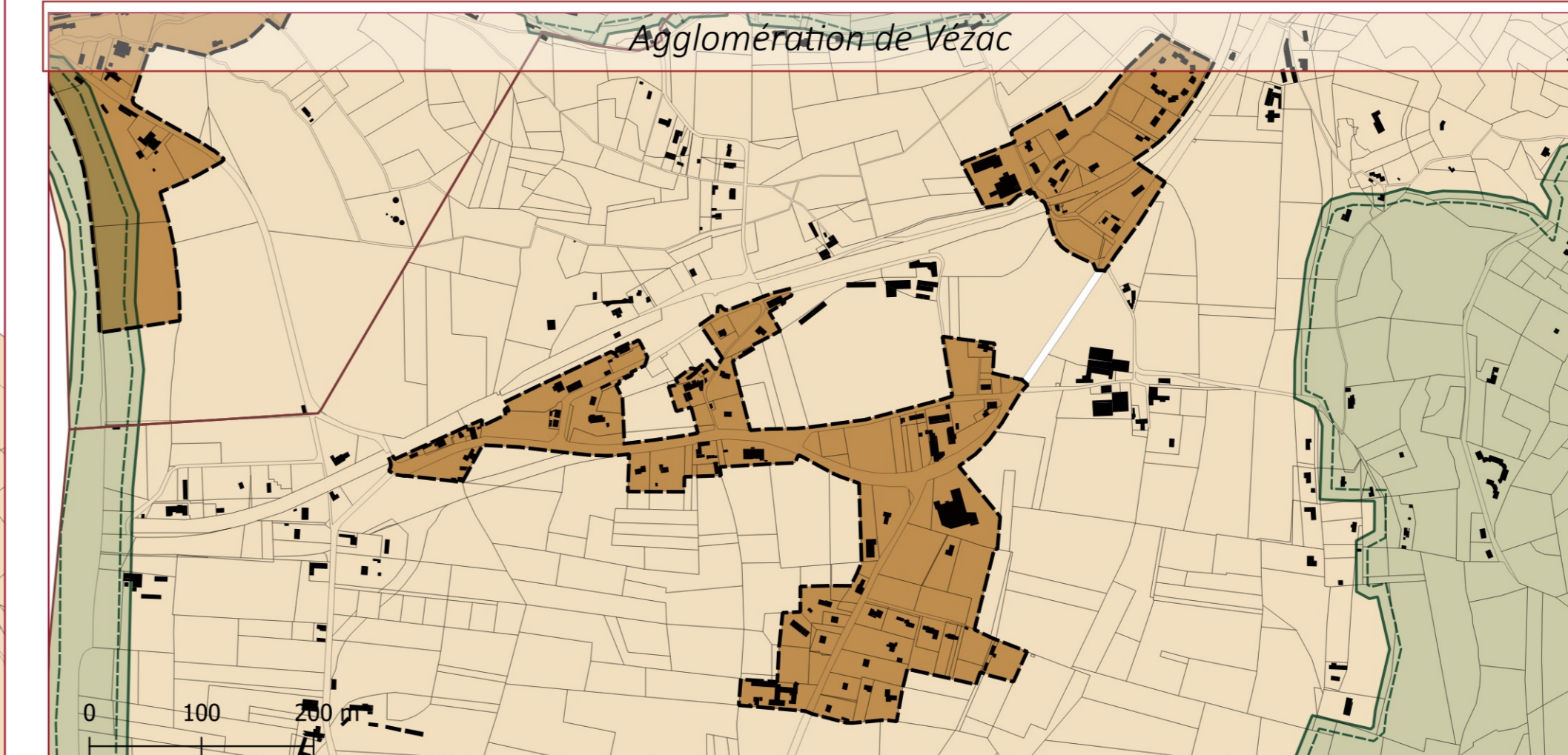
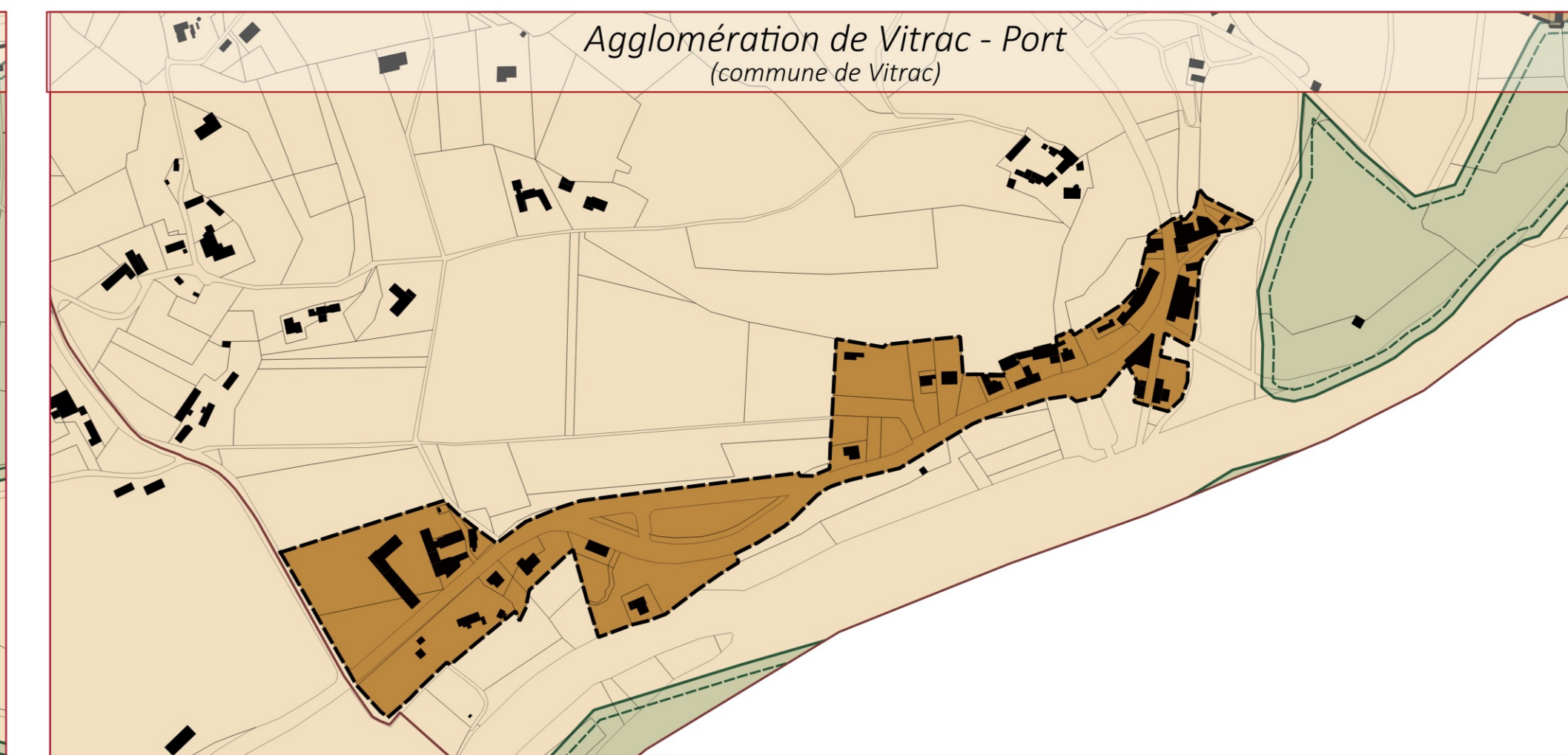
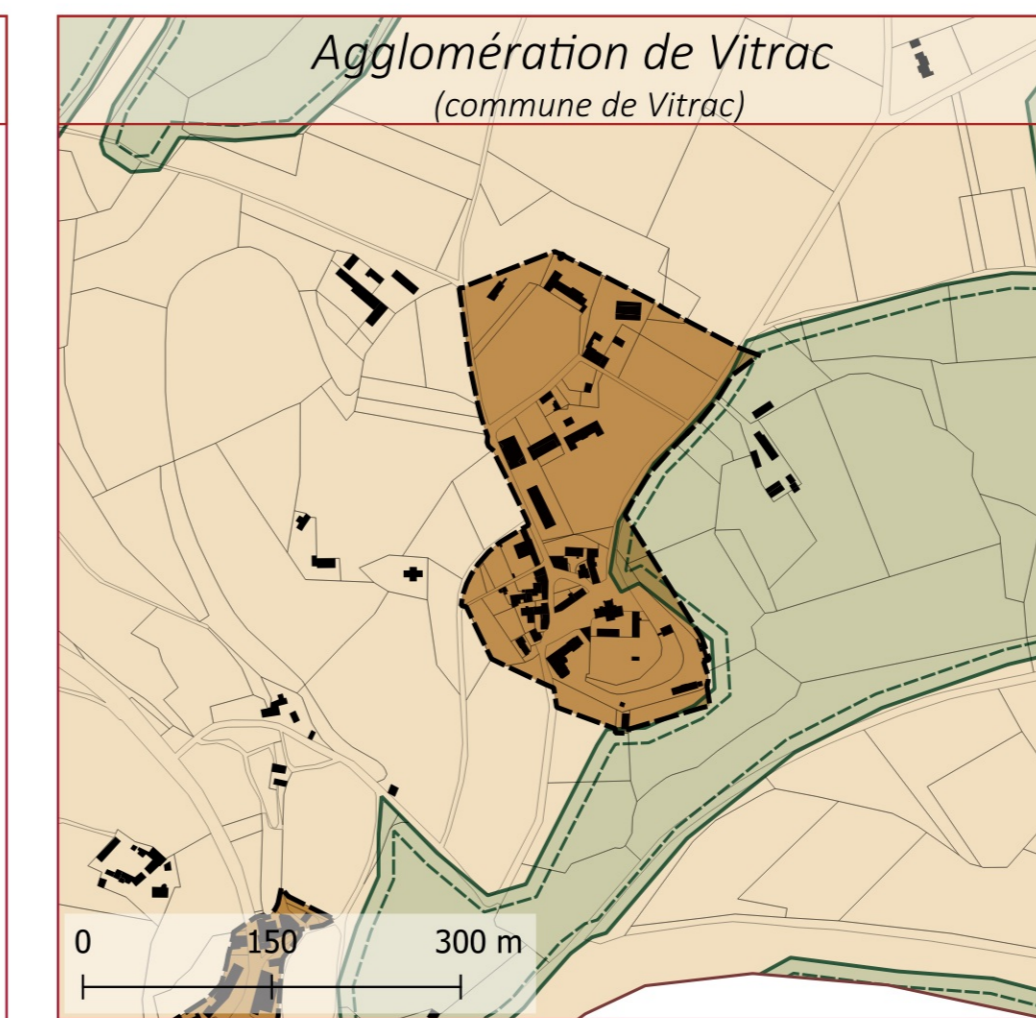
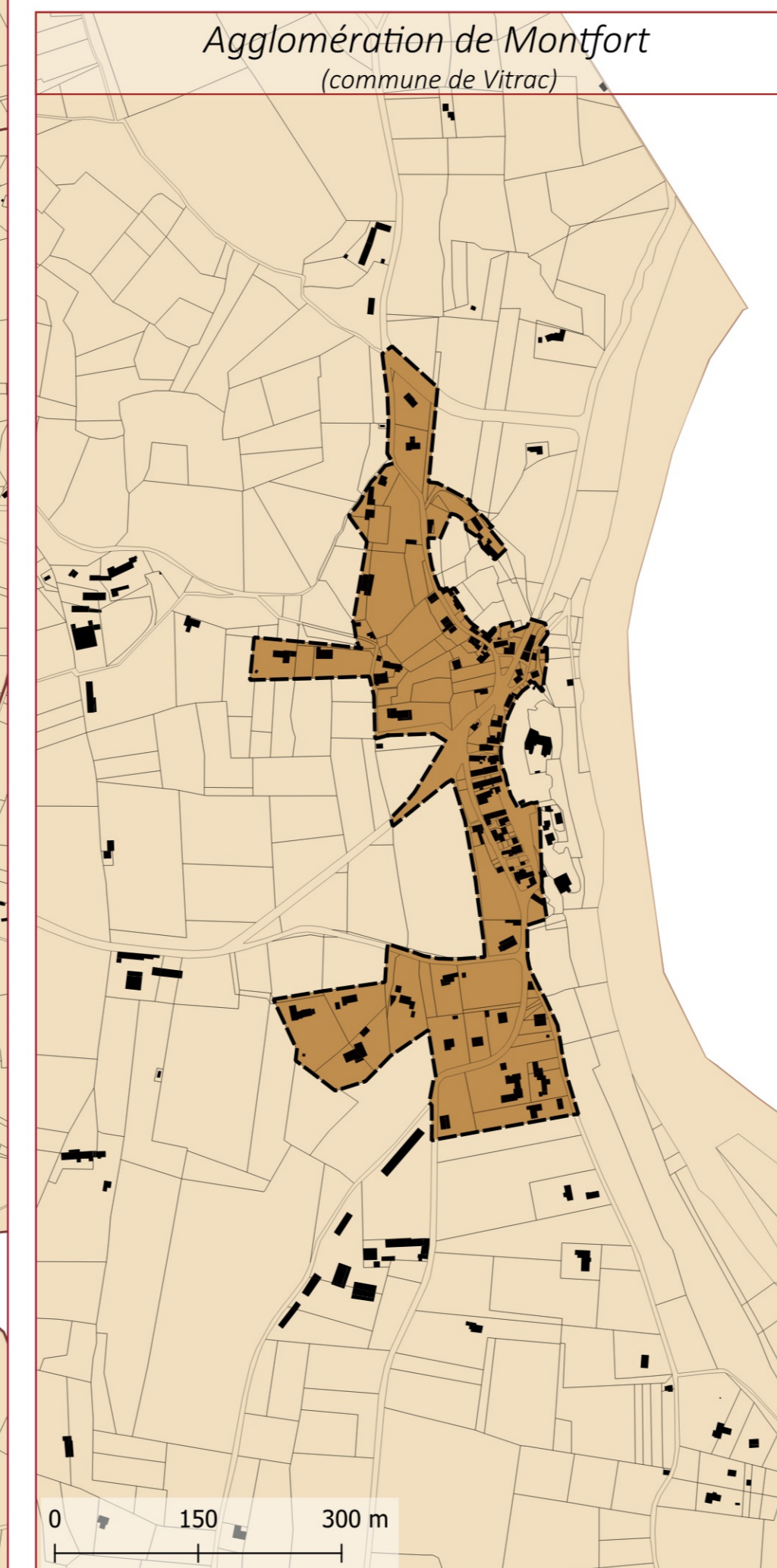
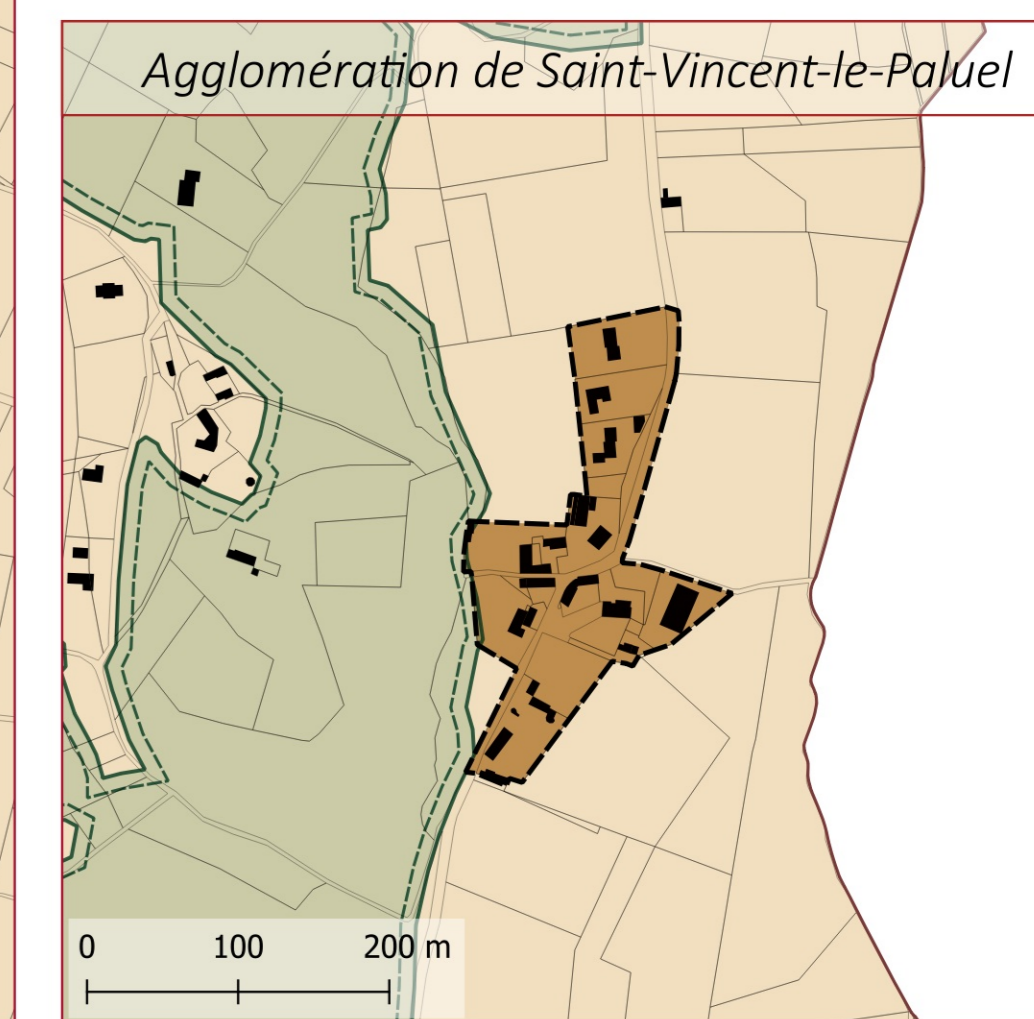
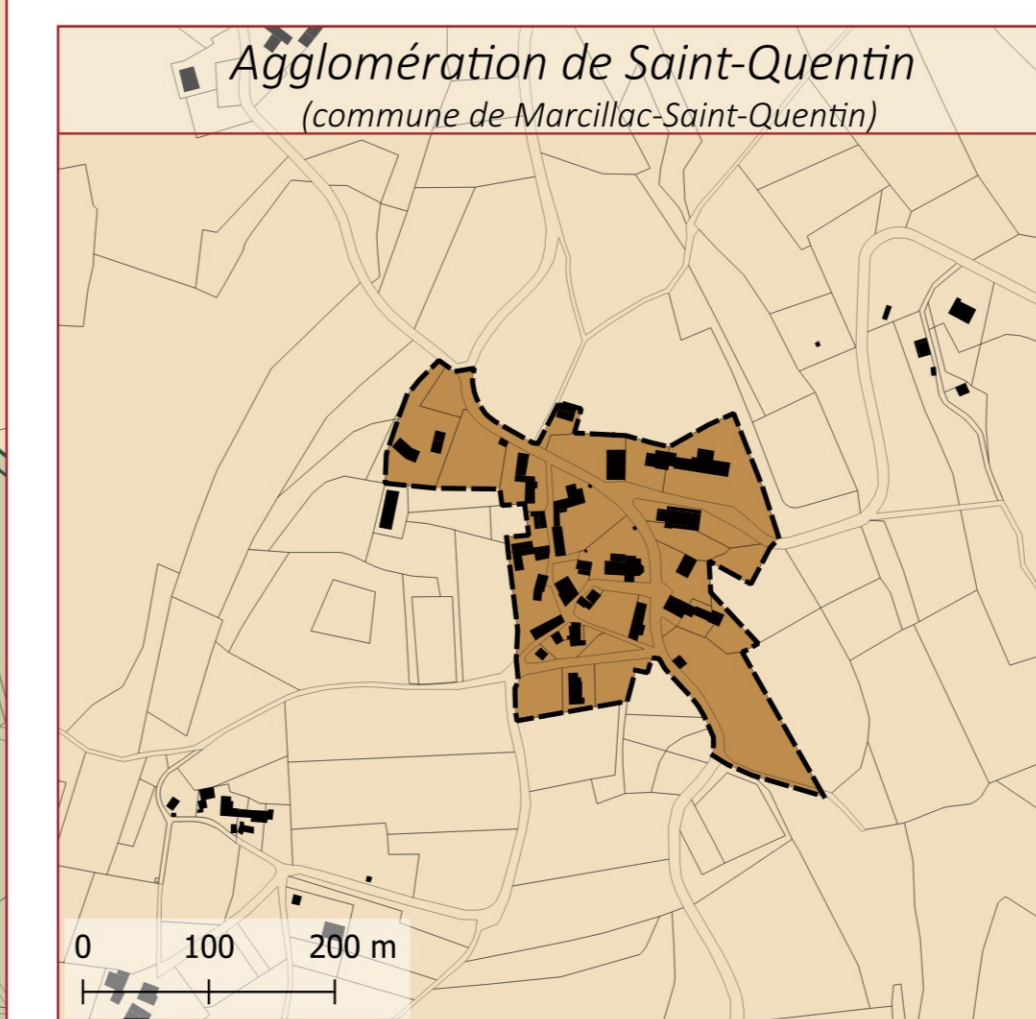
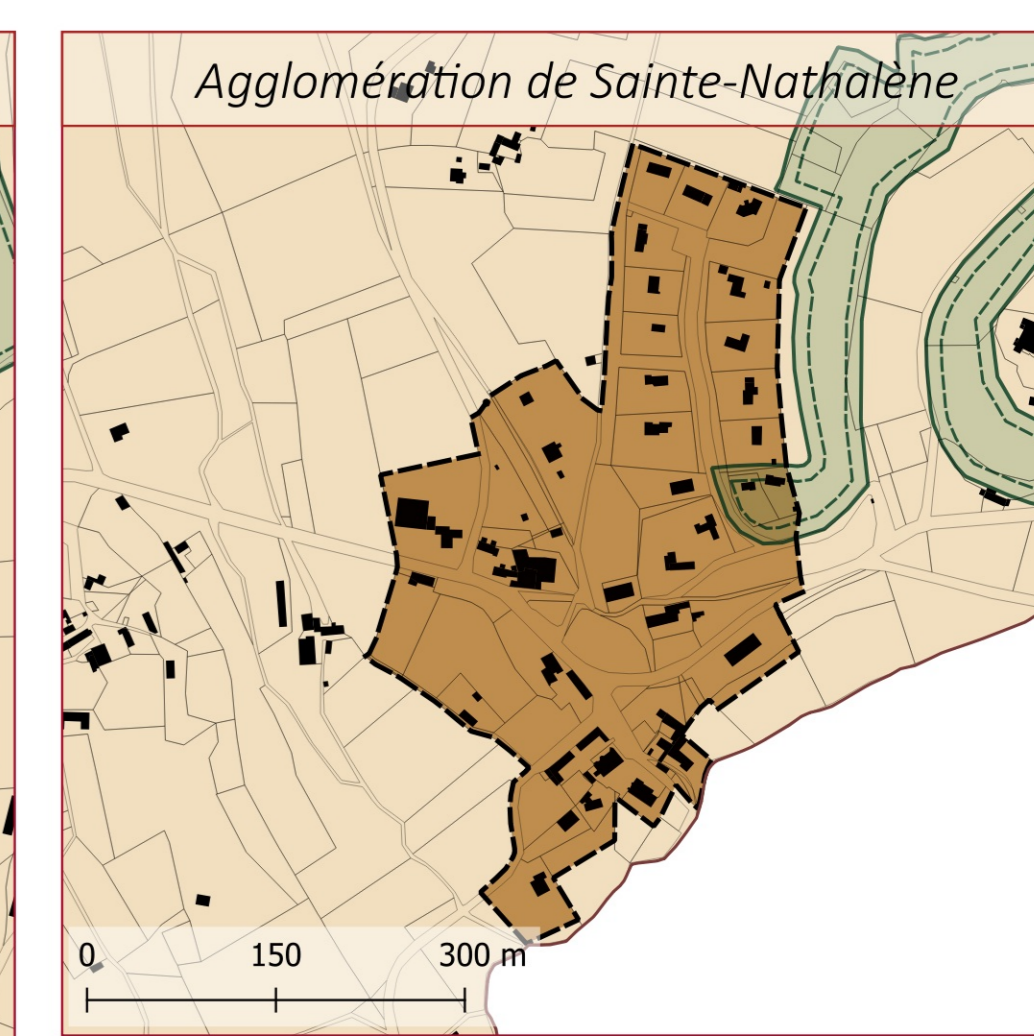
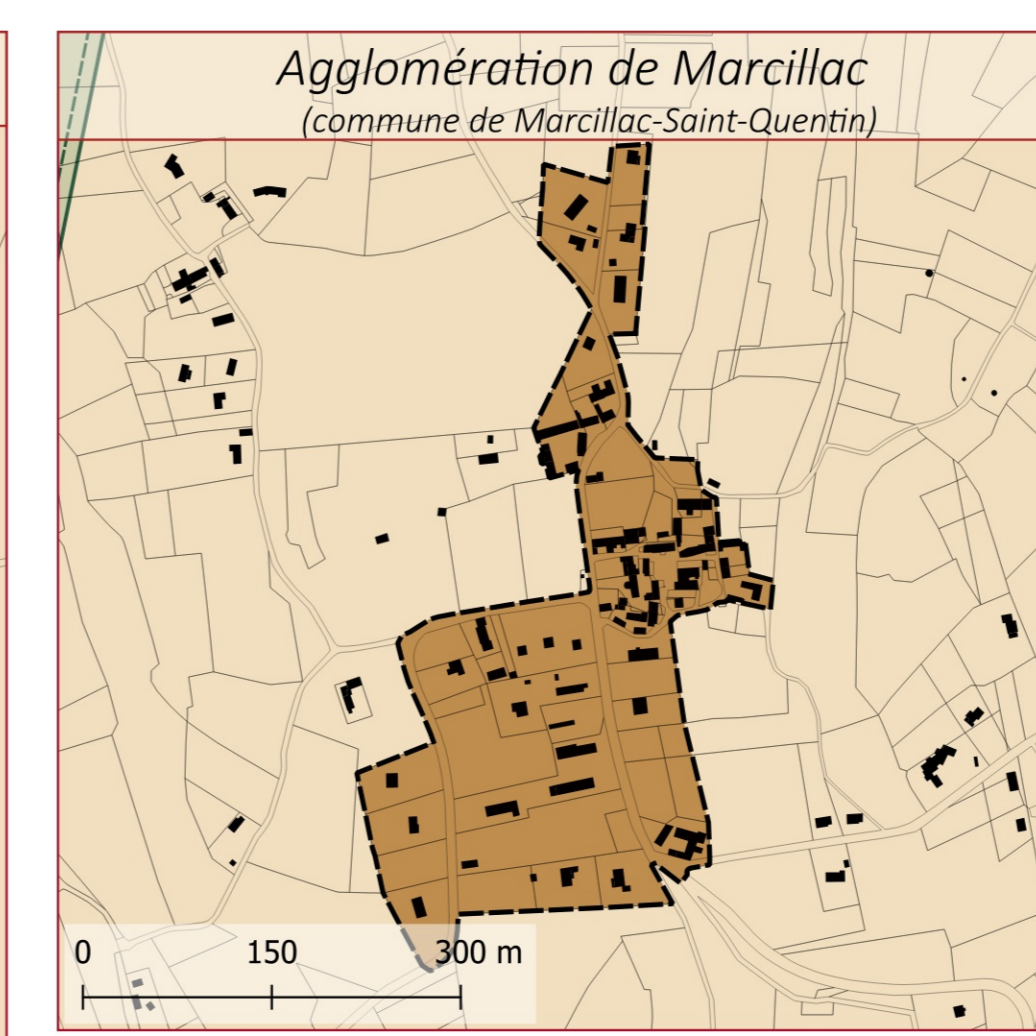
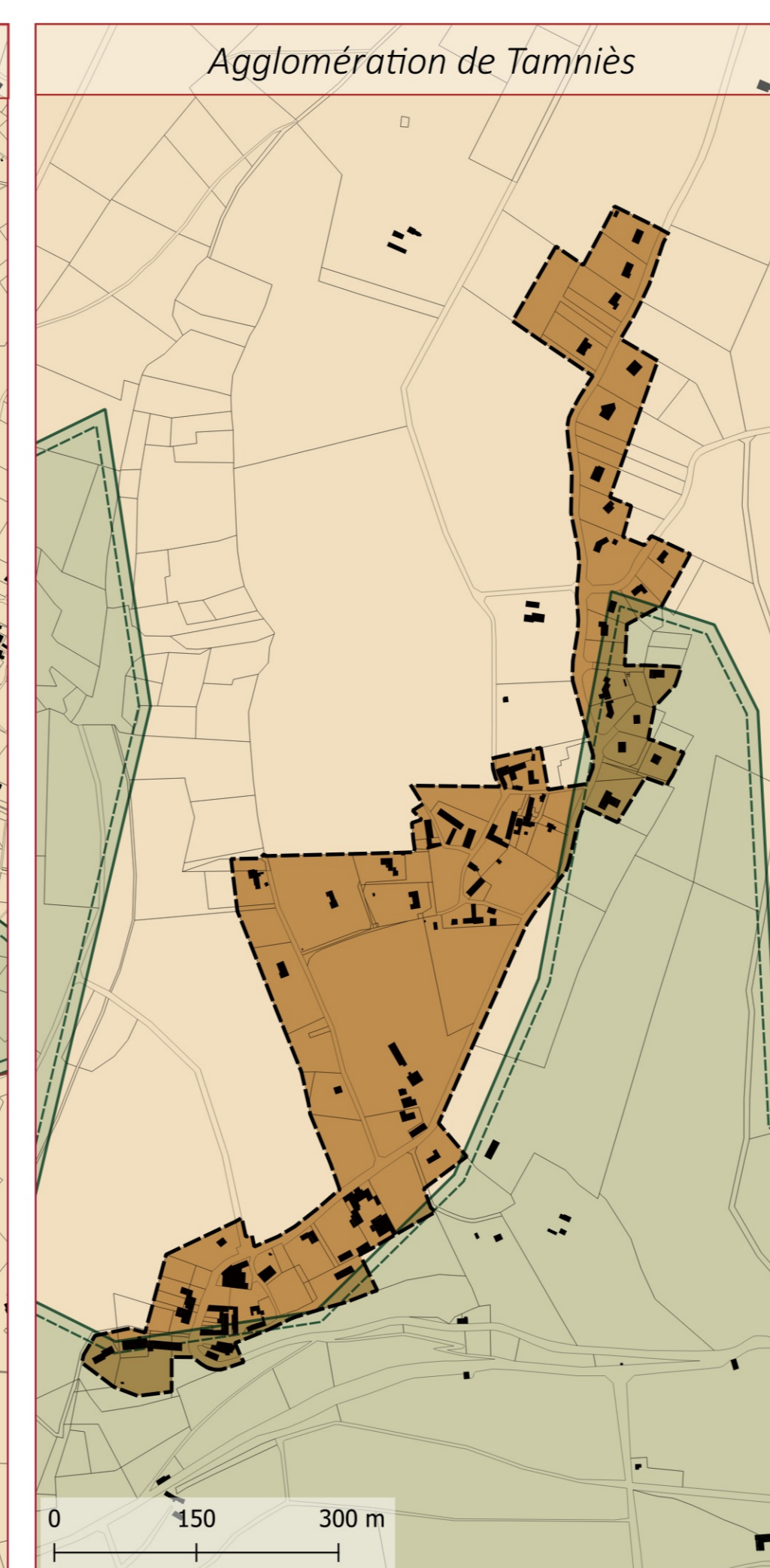
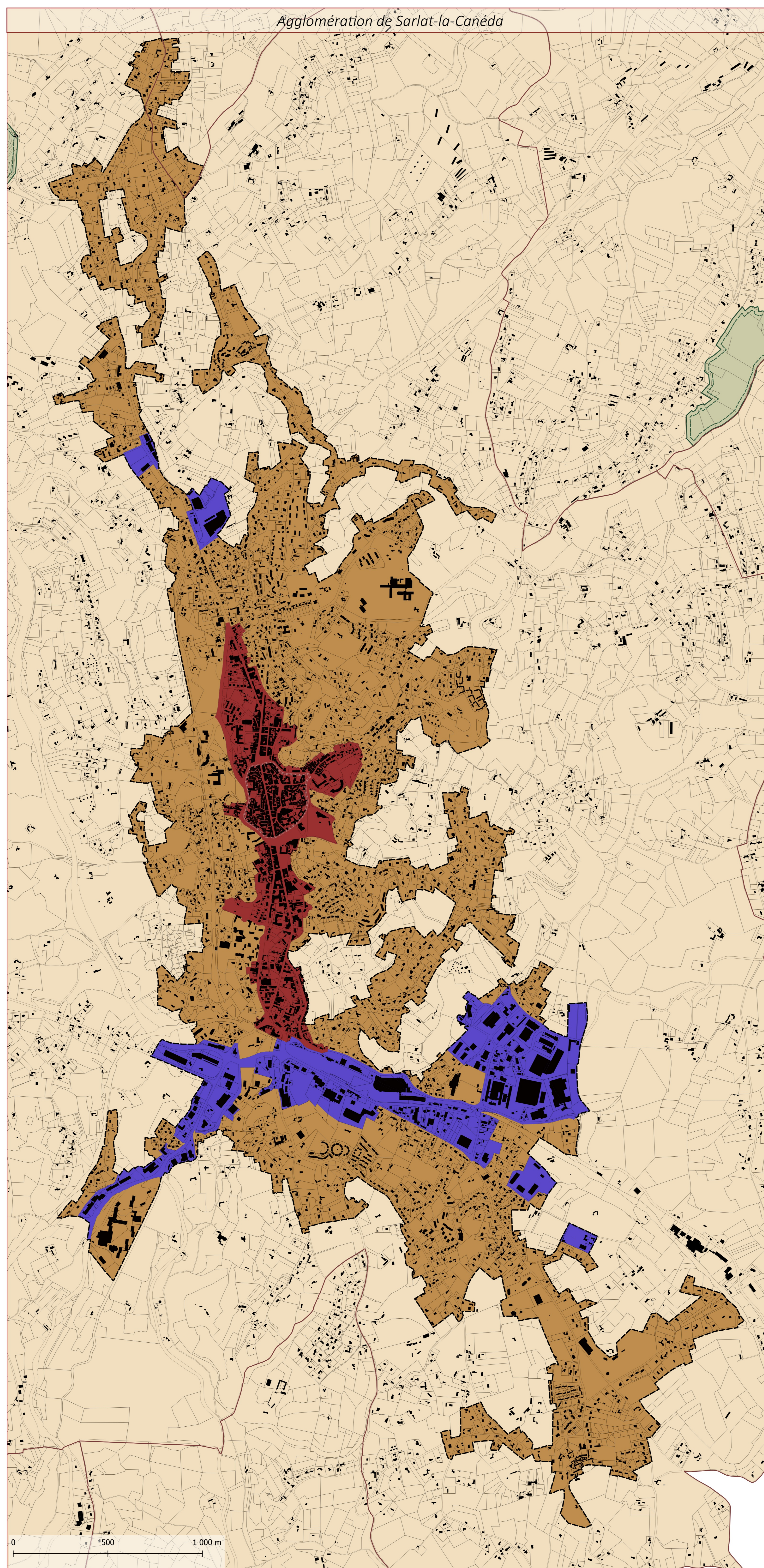


RLPi de Sarlat-Périgord Noir
Plan de zonage
3.2 Zoom sur les agglomérations reconnues par le RLPi



Légende

- Zonage du RLPi
- Zone 1
 - Zone 2
 - Zone 3
 - Zone 4
 - Enveloppe des agglomérations reconnues au titre du RLPi
- Fond de carte
- PSMV de Sarlat-la-Canéda
 - Zones Natura 2000
 - Bâtiment cadastré
 - Parcelle cadastrale
 - Limite communale



Approuvé le 3 juillet 2023

